
NEW JERSEY BEEKEEPERS



ASSOCIATION



NEWS

VOL 18 ISSUE 3

APR / MAY 04

**The NJBA Spring meeting will
be held May 15 at Harvey's
Honey Farm in Monroeville, NJ**

to accommodate large attendance, if
needed.

Dr. Mike Stanghellini

More info on the back cover.

This will be a day of hands-on activities and demonstrations, with the added benefit of seeing how a big commercial beekeeping family runs their business. We will see the Harvey's impressive hive equipment workshop, honey extraction and beeswax processing equipment, honey and bee equipment storage facilities, and their many bee colonies coming in and out for pollination contract services. Live demonstrations will be held on the use of various varroa mite IPM tactics, such as fogging colonies with food grade mineral oil and spraying bees with the new varroa control agent, Sucroside. Additional demonstrations on small hive beetle detection and control, foulbrood identification kits, queen grafting, and others are also possible and being planned. So come out for a day in the sun (we hope!) with the bees and your fellow beekeepers! Plan to start around 10:00 am and finish in mid-afternoon, around 3:00 pm. Demonstrations and other sessions will be held more than once this day

Beekeepers Needed

Looking for beekeepers in Delaware, New Jersey, Maryland, Pennsylvania, and West Virginia who would like to test the varroa threshold.

Dewey Caron (U. Delaware), Mike Embrey (U. Maryland), Dennis van Englesdorp (PA Dept. of Ag.) and Nancy Ostiguy (Penn State) are looking for beekeepers who would be willing to monitor varroa levels in honey bee colonies. We need to test the mite threshold level in a large number of colonies to determine if the threshold value works.

What you need to do?

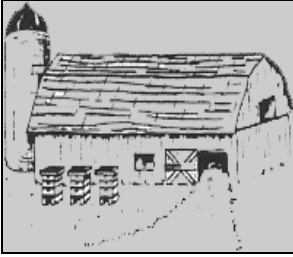
- (1) Be willing to monitor for varroa at least every 3 weeks throughout the summer/fall.
- (2) Be willing to consider not treating colonies that are below the threshold.
- (3) Report on winter survivorship.

Contact Nancy Ostiguy at Penn State:
Department of Entomology
501 ASI
University Park, PA 16803

nxo3@psu.edu
or 814-863-2872.

S & F Honey Farm

**E-mail
Info@sfhoneyfarm.com**



**We ship UPS
Call or visit us online at
www.sfhoneyfarm.com
to request our FREE catalog
Visa/Mastercard Accepted**

**NJ Bred Bees & Queens
Quality Beekeeping
Supplies
Glassware
Honey Stix Distributors
Mead Making Supplies**

**57 Amwell Road
Flemington NJ 08822**

**Phone
(908) 782-7525**

**Fax
(908) 806-0770**

PRESIDENT'S COLUM

Visibility and Accountability - These two words sum up the objectives to be achieved by our organization in 2004. These goals have been set for the benefit our membership, our industry, and our future.

Our organization, led by your executive board, will present a positive image of the honey bee and beekeeping to the public in as many ways possible. We will start within ourselves by redefining and sharpening our organization's mission and purpose. This will require a constitutional change to be approved by you, our members.

We will use this energy to educate the public about bees and beekeeping using all means at our disposal. Through our Internet presence, print, media coverage, state & county

fairs and events, school demonstration, promotional items, and plain one-on-one talking to neighbors we must get our message across.

We must all become better beekeepers and neighbors. View your beeyard through your neighbor's eyes. Keep in mind this neighbor has concerns and fear about your bees. Simply explaining that honey bees are 'friendly & beneficial insects' may not be enough of an effort.

Installing privacy fence or landscaping around your yard shows you care. Out of sight is out of mind. **Paul Raybold**, our State Apiarist, and the NJ Department of Agriculture have developed a suggested listing of 'Good Neighbor' guidelines. Check them out on page 10 and become a good neighbor. Should a town place a ban on keeping honey bees, the blame is ours.

>> to page 6

NEW JERSEY HONEY

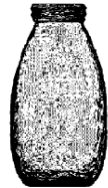
Blueberry, Cranberry, Clover, Wildflower, Cantaloupe, Butter Beans

Also Florida Orange Blossom, Palmetto

Bakery - Bulk - Wholesale -

Retail

Beeswax



All Our Own Production

Distributor of Gamber Honey Containers - Classic - Economy - Plastic
Pallet Prices

HARVEY'S HONEY

912 ROUTE 40

MONROEVILLE NJ 08343

US HWY 40 MILE POST #15

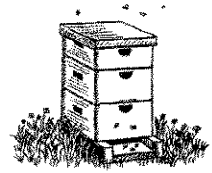
TELEPHONE 856 358-1010

E-MAIL HARVHONEY@AOL.COM

SALEM COUNTY

FAX 856 358-1166

VERMONT PINE BEE SUPPLIES



HIVE BODY \$7.00
BUDGET \$5.50
MEDIUM SUPER \$5.00
BUDGET \$4.25
SHALLOW SUPER \$4.50
CUT COMB SUPER \$3.75
BOTTOM BOARD \$4.50
100 6 $\frac{1}{4}$ FRAMES \$50.00
\$.50/BOX PALLET
DISCOUNT

HONEY PRICE HIGH!!!
EQUIPMENT CHEAP!!!
TIME WASTING!!!

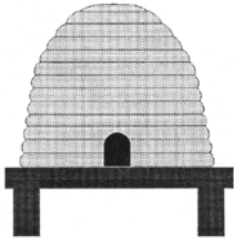
ASSEMBLED EQUIPMENT
AVAILABLE

CALL FOR COMPLETE
PRICE LIST

HARVEY'S
856 358-1010

School or Group Presentation

**Live Bees
Honey Taste**



Sting Therapy

**Tom Fuscaldò
973 942-5066**

We are now in the planning stage and searching for your ideas concerning the best methods to show off our bees. No idea will be rejected. Our entire list of presentation ideas will be submitted with the best 4 or 5 selected. All ideas or presentations must be scientifically correct, shown in a positive light, and actively involve youth participation. They must also be economically feasible, or have sponsor support. We have outdoor exhibitor areas but anticipate most exhibits to be held indoors. Bee beards, insect houses, puppets show, bee products, bee biology, storybook sessions, illustrations, etc. are just a few ideas.

Give away items can be included but you must be able to provide thousands of the items.

Other exhibits will include a wide range of beneficial insects,

Fellow Beekeepers

It is with great anticipation and excitement that I announce the 1ST **Annual Bug Celebration Weekend** in New Jersey to be held on July 31 and August 1st, 2004 at Liberty Science Center, Liberty State Park, Jersey City, NJ. Created jointly by the New Jersey Beekeepers Association and Liberty Science Center, this event will feature insects of all types that can be touched, drawn, smelled, and viewed up close to the fascination of all. This interactive event will feature top entomologists from area Universities along with Specialists that deal with insects on a day-to-day basis. Anticipated attendance for the inaugural weekend is 7000. This family oriented festival also expects wide media coverage.

One of the featured insects will be the New Jersey State insect, *Apis mellifera L.*, the honey bee!

Jean's Honey, Inc.



**NJ - NY - PA - Honey in
60 lb. Pails
Cut Comb Honey**

**NJ Nucs Available
in Spring**

**George Schaefer
(908) 782-7912**

www.jeanshoneyinc.com

butterflies, beetles, and racing roaches. Viewings at the Kodak Imax® Dome theater may also be included.

Thousands of young inquiring minds will take the message we present and preserve that image forever. This is a wonderful opportunity to present the honey bee in a positive image to a new generation.

Schuler's Bees

We Fill Your
Pollination Needs



TIM AND PATTY SCHULER

PO BOX 228
RICHLAND NJ 08350-0228

(856) 697-0483

Pollination Services
Honey - Beeswax

Royalty News

At the Winter Meeting we crowned the new Honey Queen and Honey Princess for 2004. The Honey Queen remains Lauren Kurela who most of you know. Lauren has been in the program since she was eleven years old and came in as the Honey Princess under Tina Puvel. Our new Honey Princess,

Amanda Ziemba, is new to our Organization.

Lauren is 15 years old and a Sophomore at Hackettstown High

"Mind Your Own"

Beeswax Products

**Producers of Quality
Beeswax Candles &
Beeswax Hand Creams &
Lotions**



*Enhance your selling power
at fairs, shows and festivals
with our line of quality
beeswax products*

Wholesale & Retail Pricing
Available

Visit us at

www.mybeeswaxproducts.com

or send for our catalogue sheet

**PO BOX 1
CROSSWICKS NJ 08515-0001
(609)758-3215
npuvel@comcast.net**

10% discount on retail sales for
all NJBA members

BEEKEEPER

Bees give us sting therapy,
orange juice, apple pie
and even honey.



- School Lectures ●
 - Swarm Removal ●
 - Free Advice ●
 - **Sting Therapy** ●
- Call for details

Tom Fuscaldo

429 Preakness Ave.
Paterson NJ

School. She is a Varsity Volleyball player since her Freshmen year. In addition, this year

Lauren will be going out for the Softball Team. Lauren's plans to become a Interior Designer.

Amanda is also 15 and a Sophmore at Hackettstown High School. She is a Varsity Field Hockey player and Varisty Basketball player. Amanda plans to become a doctor and work in a Neo-natal intensive care unit.

Both of our girls will be attending the Beekeeping Short Course at Rutgers in April. Amanda for the first time. She is very excited about this opportunity. Lauren is going to brush up on all the new information. Both girls will also be working with Dan

Kurela, starting up and keeping their own hive.

Our first appearance will be in the St. Patrick's Day Parade in Seaside Park on Saturday March 13th. Lauren and Amanda will be riding in a candy-apple red Mustang convertible! Watch for them on the T.V.

There are great plans for improving the Honey Queen Program this year. We have contacted people all over the Country for their help and input. Our plans are to do the very best job we can of reaching out to the public to improve the awareness of how vital honeybees are to the ecological system.

Need our girls for anything? Please call me, Carolyn Kurela at (908) 637-6644 or e-mail me at kurela@comcast.net. We will be glad to come and help!

Carolyn Kurela

>> from page 2

Attendance at NJBA State meetings should be a must for all members. We all have hectic, busy schedules but shouldn't you place a premium on a day that strengthens your knowledge of bees, energizes your soul, and offers lunch? Upcoming topics range from fogging colonies with sugar esters to creating and marketing new bee products. Be sure to attend our Bug Fest at **Liberty Science Center**. This will be the start of something BIG!

I would like to welcome back our **2004 Honey Queen, Lauren Kurela** and congratulate our new **2004 Honey Princess, Amanda Ziemba**. Queen Chair, Carolyn Kurela, has put together a solid program that allows the girls to really sell our industry to the public.

We also welcome our new Publicity Chair, **Cynthia Werts**, who

we intend to keep very busy She will be our media spokesman.

All members should congratulate **Ray Markley**, our **2004 Jake Matthenius Distinguished Service Award** recipient. Ray has served, and continues to serve the NJBA,

Well, it will be a busy but entertaining year for NJBA members! I hope you will be there with us. This is your organization and we hope to steer it in a new direction, a direction that includes prosperity, edification, and a new partnership with the people of New Jersey.

Dan Kurela

Bee Culture

THE MAGAZINE OF AMERICAN BEEKEEPING

Don't Miss Even One Exciting Issue of *Bee Culture* Magazine filled with everything you want to know about:

- Bees • Beekeeping • Beekeepers •
- How-To's • Honey Report • Profiles •
- Recipes • Funny Stories • Research •
- Something For Everybody •

Take Advantage of This Incredible Discount Because You Are In *THIS* Beekeeper's Association



Send check to:

Bee Culture Magazine
623 W. Liberty St., Medina, OH 44256
or call 800-289-7668, Ext. 3220
with credit card



- **BEST QUALITY**
- **BEST SERVICE**
- **BEST SUPPORT**

WE SELL THE HIGHEST QUALITY BEEKEEPING SUPPLIES IN THE NATION
-ALL AT COMPETITIVE PRICES!

QUALITY DOES NOT COST...IT PAYS

★ SEND FOR OUR FREE CATALOG



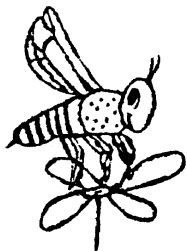
ORDER TOLL FREE

1-800-BEESWAX

FAX ORDERS 1-336-921-2681
Customer Service 1-336-921-3640
www.beeequipment.com

his community, and church with unselfish service. He is a model for us all and deserving of our gratitude and respect.

Are you ready to earn your 'Black Belt' in beekeeping? **Dr. Mike Stanghellini** introduced our new **Master Beekeeper** program at the Winter Meeting and it should prove interesting, educational, and enjoyable. Stay tuned for details on this exciting new program!



Cedar Brook Apiaries

*We Never Sting
Our Customers*

Pollination, Pine barrens honey and beeswax

**Shane and Joyce
Woodruff**

**124 Bailey Lane
Hammonton, NJ 08037
(609) 567-8388**

honeybees100@yahoo.com

Beekeeping Courses:

Rutgers's Short Course. If you did not make plans to take this course already, you might still be in time to get in. Full information was provided in the previous newsletter. I copy here the basics.

The course will be held **April 16, 17, and 18** at the Rutgers Cook College campus in New Brunswick.

Registration fee before April 4 is \$75/person (\$105/person after April 4). Bring your own lunch or register for a provided box lunch for an extra \$16 (covers Friday and Saturday).

By Phone: (732) 932-9271
Registration Desk. 8:00 a.m. to 4:30 p.m. (EST), Monday to Friday. Please have your credit card number ready.

By Fax: (732) 932-8726, 24 hours. Please fax credit card information or a copy of your check, money order or purchase order with your registration form.

Online:
<http://cook.rutgers.edu/~ocpe/>

**Delaware Valley College
Beekeeping Course, June 25, 26 & 27.**
In case you miss the one above, or if you want further training, consider attending the DVC course. More information in "Other Events" on page 14.

2004 STATE HONEY SHOW RESULTS

Best of Show: Walt Wilson, Sr.

**Extracted Honey Division: Best of
Division: Hill top Honey**

Class 1: Extracted Light
1st: Hill Top Honey
2nd: Ken Peteroti
3rd: Marian Chandler

Class 2: Extracted Light Amber
1st: S&F Honey Farm
2nd: Curtis Crowell
3rd: Coppola

Class 3: Extracted Amber
1st: Ned & Marget Horsey
2nd: Grant Siles
3rd: Pat Ricci

Class 4: Extracted Dark

- 1st: Wolfgang Kuehn
- 2nd: Hill Top Honey
- 3rd: Ken Peteroti

Honeycomb/Spreads Division Best of Div.: Walt Wilson Sr.

Class 5: Sections

- 1st: Wilson Pollination
- 2nd: Marian Chandler

Class 6: Creamed Honey

- 1st: Hill Top Honey
- 2nd: Bob's Bussy Bees
- 3rd: Wolfgang Kuehn

Class 7: Chunk Honey

- 1st: Honey Lady
- 2nd: Grant Siles
- 3rd: Fred Sainger

Class 8: Frame of Honey

- 1st: Walt Wilson Sr.
- 2nd: Honey Lady
- 3rd: Petriw

**Mead Division: Best of Division:
Fred Sainger**

Class 9: Mead, dry

- 1st: Wolfgang Kuehn
- 2nd: Len & Cheri Klinker
- 3rd: Blum Blossom

Class 10: Mead, sweet

- 1st: Fred Sainger

Class 11: Mead with fruit juices

- 1st: Glen & Cheri Klinker
- 2nd: Morse
- 3rd: Wolfgang Kuehn

Class 12: Mead, sparkling

no winners

**Beeswax Division: Best of Division:
Honey Lady**

Class 13: Block of Beeswax

- 1st: Frank Locks
- 2nd: Gooserock (Landi Simone)
- 3rd: Mind Your Own

Class 14: Novelty Beeswax (any size/shape)

- 1st: Cathie Skove
- 2nd: Gooserock (Landi Simone)
- 3rd: Geismar

Class 15: Candles, tapers, rolled/poured/dipped

- 1st: Mind Your Own
- 2nd: Gooserock (Landi Simone)
- 3rd: Cathie Stove

Class 16: Novelty candles (any size, shape)

- 1st: Gooserock (Landi Simone)
- 2nd: Cathie Stove
- 3rd: Katz

**Cosmetics Division: Best of Division:
Cathie Stove**

Class 17: Hand cream / lotion

- 1st: Len & Kerri Klinker
- 2nd: Mind Your Own
- 3rd: Gooserock (Landi Simone)

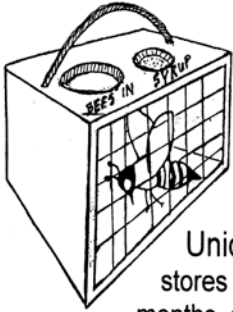
Class 18: Soap

- 1st: Gooserock (Landi Simone)

Class 19: Lip Balm

- 1st: Cathie Skove
- 2nd: Mind Your Own
- 3rd: Gooserock (Landi Simone)

<p>2004 Jake Matthenius Award Ray Markley</p>
--



BEE HOTEL

For Apitherapy

Unique Construction -
stores hundreds of bees for
months, securely, keeping them
lively for Honey Bee Therapy.

Saves frequent trips to your friendly
beekeeper.

Send for FREE literature
or order for \$42.- plus
\$8.- shipping

Dick Johnson
850 Mill Street
Windham NY 12496
(518) 734-4629

Guidelines for Keeping Bees in Populated Areas

There are approximately 2,000 to 2,500 registered beekeepers in New Jersey. Of these, only about 2 percent can be considered commercial beekeepers having 20 or more colonies of bees. The majority of the registered beekeepers in the state manage only about 1 to 10 colonies.

It is possible to keep honey bees in crowded suburban areas, on tiny city lots or on rooftops in large or small cities without problems. However, keeping bees successfully in a populated area requires a good understanding of basic bee biology, property rights and human psychology. Beekeepers in suburbs and cities need to manage their bees so they do not become a nuisance to their neighbors. By understanding the circumstances under which bees will bother people, beekeepers can take measures to alter circumstances so their bees do not create a problem.

Honey bees can be kept almost anywhere there are flowering plants that produce nectar and pollen. Choose a site for beehives that is discrete, sheltered from winds and partially shaded. Avoid low spots in a yard where cold, damp air accumulates in winter. Be considerate of nonbeekeeping neighbors. Place hives so that bee flight paths do not cross sidewalks, playgrounds or other public areas. Provide your bees with a water source in your yard to prevent them from seeking out water at neighbors' swimming pools or water spigots.

The Department has developed the following best management practices for beekeepers to reduce potential conflict with neighboring property owners.

1. There must be no more than three hives of honey bees per lot size of one-quarter acre or less.
2. A substantial barrier / fence must be erected to prevent animals and children from coming into close contact with the hives.
3. No hive of honey bees will be maintained within 15 feet of a boundary line of the property on which the hive is located, unless a 6 feet high solid fence or hedge is erected separating the colonies from a neighbor's property.
4. All colonies must be located at least 25 feet from a public sidewalk, alley, street or roads.
5. All apiaries must have on site an adequate source of water within 25 feet of the hive(s) at all times (especially between March 1 and October 31).
6. All bee equipment and hives must be maintained in good condition.
7. All colonies must be kept in moveable frame hives in accordance with N.J.S.A.4: 6-10.
8. All colonies must be inspected by the beekeeper or his delegate no less than three times between March 1 and October 1 of each year.
9. Hives could be painted in subdued colors such as gray, green, brown or even with a camouflage pattern. They don't need to be white, yellow or red!

Paul Raybold

Beekeeping clothing

sturdy 8 oz./sq. yard
100% white cotton



Pull over Jacket, big front pocket.
Requires a helmet, not included
\$34



Apollo Full Suit, with a front vertical zipper, 2 zipper hood, just as in the Apollo Jacket on the left, boot zippers on the legs and front and rear pockets

\$68

Compare this full suit to Mann Lake's Honey Maker Suit that sells for \$140 + \$8 shipping to NJ!!!



All available in S, M, L and XL

Shipping to NJ or PA by mail with delivery confirmation is \$4 for either jacket, \$6 for the full suits.

Items will be shipped upon receiving payment

Catch me in one of our meetings or make and send payments by check or money order to:



Apollo Jacket, front zipper, with collapsible veil, 2 pockets
\$45

Compare this jacket to Mann Lake's Pollinator Jacket that sells for \$106 + \$8 shipping to NJ, and is not even 100% cotton!!!

Also available...

Alchemy Farm, LLC.

431 Stamets Rd.

Milford NJ 08848

alchemy@blast.net

908 996-4806

NJBA WHO'S WHO

President

Dan Kurela 908 637-6644
kurela@comcast.net

1st Vice President

Joe Lelinho 973 228-4806

2nd Vice President

Jim Copola 973 661-9200
coppola56@yahoo.com

3rd Vice President

Walt Wilson, Jr.

Secretary - Treasurer

Landi Simone 973 263-0674
beelady@optonline.net

Recording Secretary

Nancy Alexeichik 609 654-6284
nancnt26@aol.com

EAS Director

Dave Peregmon 856 678-4651

Ag. Convention Delegate

Bob Harvey 856 358-1010

NJBA News Editor

Alejandro Berlin 908 996-4806
431 Stamets Rd. Milford NJ 08848
alchemy@blast.net

Research Committee

Jake Matthenius 908 454-7316

Speakers Bureau & Film Librarian

Pat Ricci 609 758-8729
Mrpatr@comcast.net

Honey Queen Committee

Carolyn Kurela 908 637-6644

Budget Committee

Bob Hughes 609 585-4359
BobsBuzzyBees@aol.com

Publicity

Cynthia Werts
wertssindee23@aol.com

Webmaster

Richard Bruno
richard.bruno@verizon.net

NJ APIARY INSPECTOR

Paul Raybold 609 292-5440

BRANCH PRESIDENTS

CENTRAL JERSEY

David Strudler 732 323-0303
oldtymer@verizon.net

ESSEX COUNTY

Joe Lelinho 973 644-9024
klutch.cargo@verizon.net

JERSEY CAPE

Karl Novsak

MORRIS COUNTY

Barbara Sutton 908 876-3113

NORTHEAST JERSEY

Tom Fuscaldo 973 942-5066

NORTHWEST JERSEY

Jake Matthenius 908 454-7316

SOUTH JERSEY

Shane Woodruff 609 567-8388
honeybees100@yahoo.com

SUSSEX COUNTY

Debra Brodhecker 973 702-1223
sbrodhecker@compuserve.com

Fellow Beekeepers:

If the public calls you about honey bees living within the walls of their homes please refer my phone number to them.

Robert: (908) 730-0830

Or pager: (908) 707-7894

After the beeps enter your number followed by the # sign.

NJBA NEWS Annual Ad rates

Ad size	Location of ad	Price
Full page	1st 25% of newsletter	\$150
1/2 page	1st 25% of newsletter	\$100
1/4 page	1st 25% of newsletter	\$75
1/8 page	1st 25% of newsletter	\$50
Full page	rest of newsletter	\$100

1/2 page

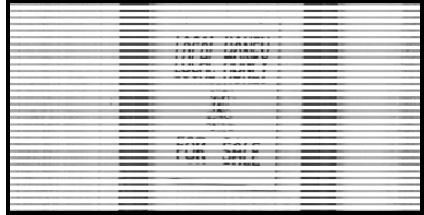
rest of newsletter

\$75

1/4 page

rest of newsletter

\$50



“LOCAL HONEY FOR SALE” Signs

14” x 18” - Bright Yellow, No Rust

Aluminum with Black Lettering

Printed Double Sided

Rounded Corners with 2 Pre-Punched Holes

**Suitable for hanging from post or
attaching to the side of a building.**

\$20.00 each + \$4.00 for shipping.

Call Jim at (609) 758-3215

**Increase your honey sales today
with this “Can’t Miss” sign**

Dadant & Sons

136 Rt. 17 C (East)

Waverly, NY 14892-0267

•Quality

•Service

•Value



Your one-stop shopping center for beekeeping supplies.

Ph. (607) 565-2860 • Fax (607) 565-3710

Toll Free Order Number 1-877-532-3268

- **Woodenware—Hives**
- **Extracting Equipment**
- **Protective Clothing**
- **Bee Medications**
- **Hand Tools**
- **Beeswax Foundation**
- **Books & American Bee Journal**
- **Smokers**
- **Mite Treatments**
- **Honey Containers**
- **Honey Handling Products**
- **Plastic Frames & Foundation**

NJBA MEETING DATES

NJBA Exec Board Meeting, Ag Building, Trenton, NJ. **May 7**, 7 PM.

NJBA Spring Meeting, **May 15**, 9:30 AM. Bob Harvey's Farm, Monroeville, NJ. Joint meeting with Delaware Beekeepers.

NJBA Exec Board Meeting, **July 8 or 9**. TBA.

NJBA Auction & Picnic, **July 17**, 9 AM. Bob Hughs, Yardville, NJ.

Bug Fest, **July 31-Aug 1**, Liberty Science Center, Liberty State Park, Jersey City, NJ.

NJBA Exec Meeting, **Oct 8**, 2004 Ag Building, Trenton, NJ. 7 PM

NJBA Fall Meeting **October 16**, 2004, 9:30 AM. Pequest Fish Hatchery & Natural Resource Education Center, Oxford, NJ.

CENTRAL JERSEY

May 21, Spring Meeting. PBA Hall, Yardville

June 12, Workshop, place TBA

Aug. 20, Summer Meeting. Ocean Co Ag. Bldg. Toms River

November 12, Monmouth Co. Ag. Bldg. Freehold

November 27, Holiday Party, place TBA

MORRIS COUNTY

April 24. Spring Hive Inspection with the NJ Apiarist, Paul Raybold. Location TBD.

June 12. Annual Picnic. Location TBD.

July 30, 31, August 1. Morris County 4H Fair, Chubb Park, Chester. Demonstration hive.

September 18. Fall Hive Inspection.

October 22, 7PM, Mini Mac Diner, Chester.

Sunday, December 5. Annual Holiday Party

NORTH WEST

June 5 or 12, at Sneider Research Farm, Pittstown, NJ. 1 -4 pm. Dennis Keeney on queen rearing. Hive inspections.

Aug 2-7, Warren County Fair. Set up on Aug. 1.

SUSSEX COUNTY

April 25, The Skove's will host. Topic to be announced.

June 13, The Osborne's will host. Topic to be announced.

August 1, Fair set-up.

September 12, Annual picnic with SE NY hosted by the Brodhecker's.

November 13, Holiday dinner.

OTHER EVENTS

Delaware Valley College Beekeeping Course,

June 25, 26 & 27

The course is offered under the direction of Dr. Robert Berthold, Professor of Biology, and Mr. Gary Bradshaw, professional beekeeper. Mrs. Marren Berthold will present a special segment on the household uses of honey. The class is intended for all skill levels, from professional beekeepers to beginning hobbyists.

Location: Delaware Valley College.
Doylestown, PA.

Fee: The cost of the class is \$75.00. DVC students, alumni, their immediate family and senior citizens will receive a \$10.00 discount. Please register as early as possible as class size is limited.

Further information:

Dr. Robert Berthold. 215 489-2285
DVC700 East Butler Ave
Doylestown PA 18901

EAS 04 Short Course/Conference
August 9-13, 2004 Seven Springs, PA
<http://www.easternapiculture.org/>

Do you know new beekeepers? Sign them up today with this form!

NEW JERSEY BEEKEEPERS ASSOCIATION Membership Form

New

Renewal

Name _____

Address _____

City _____ ST. _____ Zip _____

Phone _____ E-mail _____

Make checks payable to the local branch and
mail you dues to **your** Branch Secretary/Treasurer listed below

Junior, \$ 8

Individual, \$15

Family, \$20

Central Jersey - Curtis Crowell - 152 Borad St, Hightstown, NJ 08520

Essex County - Marian Chandler - 85 Deerfield Rd., West Caldwell, NJ 07006

Jersey Cape - Bill Eisele - 310 Old Tuckahoe Rd, Petersburg, NJ 08270

Morris County - Janet Katz - 460 Route 24, Chester, NJ 07930

North East - Karl Schoenknecht - 683 Summit Ave, Franklin Lakes, NJ 07417

North West Jersey - Alejandro Berlin - 431 Stamets Rd, Milford, NJ 08848

South Jersey - Patty Schuler - PO Box 228, Richland, NJ 08350

Sussex County - Linda Osborne - 23 Fox Hill Rd, Lafayette, NJ 07848

-----✂----- cut along this line-----✂-----

The publications listed below provide reduced subscription rates to members of beekeepers' associations

The back page of this newsletter identifies you as a member of the NJBA
Use the form below and **send it directly to the magazine publisher with
your payment** (Not to your Branch Secretary)

If you are renewing a subscription, please enclose a mailing label from one
of your old magazines to aid the publisher

The Speedy Bee, P.O. Box 1317, Jesup, GA 31598-1317

1 year, \$13.25 2 year, \$25.25 3 year, \$34.00

American Bee Journal, 51 S 2nd St., Hamilton, IL 62341

1 year, \$15.70 2 year, \$29.88 3 year, \$42.15

Bee Culture, PO Box 706, Medina, OH 44258-0706

1 year, \$17.00

2 year, \$32.00

New Jersey Beekeepers Association
Alejandro Berlin
431 Stamets Rd.
Milford NJ 08848

JERSEY FRESHTM
FROM THE GARDEN STATE

**NJBA Spring Meeting:
May 15 at Harvey's Honey Farm
Monroeville, NJ**

Harvey's Honey is located 2 miles west of the route 40 and route 77 intersection. Look for the bee hive mailbox and Harvey's Honey sign.

If you want to be able to sit down you should bring your own lawn chair.

The meeting will start at 10 am and finish by 3 pm.

There are box lunches available. To order 1 you must call Tim Schuler at 856-697-0483. State your name, phone number, and choice of Ham or Turkey sandwich. The box lunch also includes fruit, chips, and a desert.

The lunch must be ordered no later than 5/8/04.

Lunch cost = \$8.00

Price includes beverage provided by the SJBA.
