
NEW JERSEY BEEKEEPERS



ASSOCIATION NEWS



VOL. 24 ISSUE 1

DEC. 2009 / JAN. 2010

President's Message

Hi Everyone,

Well we have finally gotten some cold weather and the bees no longer have any flowers for forage. I hope that all your hives are strong and ready for the winter. To be on the safe side, it would be a good idea to check them again for food stores and feed them more heavy sugar water, at the two to one fall ratio, if they need it.



With the end of the year in sight, I would like to wish you all a happy and safe holiday season. Maybe it would be a good idea to ask Santa for that special equipment you always wanted. Good luck with that one. On another note, it's a good time to think about what you plan to enter in the state honey show. The show will be at the state annex in Trenton, our state capital. The new location has great potential for having many viewers, so I hope we can have a very good showing. This year it will be on display for several days so you will have more time to go and see it. It is really important that we have a good turn out, because it will help show the new governor and legislators how important bees are in the Garden State. All the rules for entrees are on the web site and here in our Newsletter.

As for the grant, I'm sure that Bill will have more information later in this news letter, but I want to emphasize the importance of getting volunteers to work on the different parts of the project. Please contact Bill and help out to get this project off the ground.

Time is flying fast and the winter meeting will mark the end of my two year-term as president. I would like to thank everyone who has helped especially the three vice-presidents, Bill, Landi, and Charlie. Thanks also go out to Tim, Bob, Janet, Curtis, and Angelo. Without these people, it would have been impossible to have had the club run as smoothly as it did. I would just like to say thanks to all of you for keeping the club as great as it is.
Pete

February 5 to 11, 2010 Annual NJBA State Honey Show

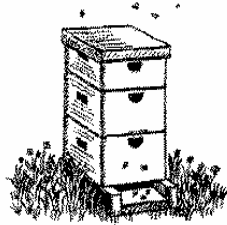
Entry form on page 12, Show rules on pages 15,16,&17

February 13, 2010 NJBA Winter Meeting

HARVEY'S HONEY

912 ROUTE 40
MONROEVILLE, NJ 08343

MANUFACTURER
EASTERN PINE WOODENWARE



NEW DEALER
MANN LAKE BEE SUPPLIES

DISTRIBUTOR
GAMBER HONEY CONTAINERS



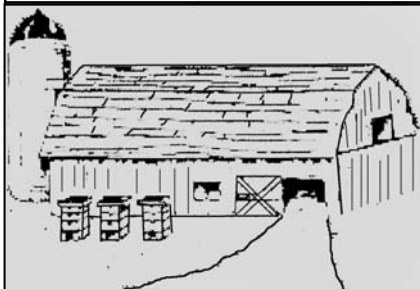
PRODUCER
NEW JERSEY AND FLORIDA HONEY AND BEESWAX

856 358-1010

FAX 856 358-1166

**US HIGHWAY 40 MILE POST 15
SALEM COUNTY NJ**

S&F Honey Farm



E-Mail:

WASITOWSKIS@YAHOO.COM

Visa/Mastercard/Discovercard

QUEENS / 3 Lb. Packages

Quality Beekeeping
supplies
Glassware

Honey Stix Distributors
Crop Pollination

We buy beeswax/propolis

MITE-AWAY II Dealer
Call or Visit us at:

57 Amwell Road
Flemington, NJ 08822

Phone/Fax

(908) 782-7525

Important Bee Dates

Jan. 15, 2010—Executive Board Meeting, Trenton

Feb. 5-11, 2010—Annual Honey Show, State Annex. Trenton

Feb.13, 2010—NJBA Winter Meeting, Rutgers Agriculture Museum

May, 6,7,& 8, 2010—Beginners Beekeeping Class, Rutgers

Directions to the Winter Meeting February 13, 2010

**New Jersey Museum of Agriculture
103 College Farm Rd, North Brunswick, NJ
08902**

DRIVING DIRECTIONS;

From New Jersey Turnpike (North or South) Exit 9 – “New Brunswick” After toll, stay right onto Route 18 NORTH Follow Route 18 to U.S. Route 1 SOUTH Get off at third exit: College Farm Road (Cook College) At end of ramp, turn right onto College Farm Road Museum is first driveway on right (look for windmill)

Garden State Parkway (from the South) Exit 129 – “New Jersey Turnpike” Take New Jersey Turnpike to Exit 9 Follow directions for Turnpike above

Garden State Parkway (from the North) Exit 130 – “U.S. Route 1 SOUTH toward Trenton” Follow U.S. Route 1 SOUTH over the Raritan River Take the fourth exit after River: College Farm Road At end of ramp, turn right onto College Farm Road Museum is first driveway on right (look for windmill)

U.S. Route 1 (from the South) While staying on U.S. Route 1 NORTH look for intersection with Route 130 shortly after, pass DeVry Institute on right side Take next exit: College Farm Road & Squibb Drive Exit will make U-turn under U.S. Route 1 to other side At end of U-turn, at stop sign, turn left onto College Farm Rd. Museum is first driveway on right

U.S. Route 1 (from the North) Follow U.S. Route 1 SOUTH over the Raritan River Take the fourth exit after River: College Farm Road At end of ramp, turn right onto College Farm Road Museum

Interstate 287 (South) Exit 1B: U.S. Route 1 SOUTH Follow U.S. Route 1 SOUTH

Carniolan Queens and Nucs

New Jersey Bred—Selected for Hygienic
behavior and Mite resistance;

Naturally winter-hardy, gentle

Nucs available Spring through Summer
RESERVE EARLY for Fall Requeening to
Reduce Spring Swarming

Karoly (Charlie) Toth— Beekeeper since 1953

(732) 873-2989 member of C.J.B.A.

38 Van Cleef Road - Somerset, NJ 08873



'New Jersey Bred'

Russian and Carniolan: Queens and Nucs

We breed our own Queens

We let our bees develop naturally without the use of chemicals

Mary & Ed Kosenski
emgold.beekeepers@verizon.net
www.emgoldbeekeepers.com

732-542-6528

Bee Hive Woodenware & Supplies

Hive Boxes, Honey Supers, Nuc Boxes, Frames,
Top Hive Feeders, Telescoping Lids, Inner covers,
Bottom Boards (solid & screen)
Other supplies—Wax Foundation, Hive tool, etc..

Pine Woodenware Manufactured in House

The Woodworking Barn

156 Plainsboro Rd / Cranbury, NJ
08512

Website:

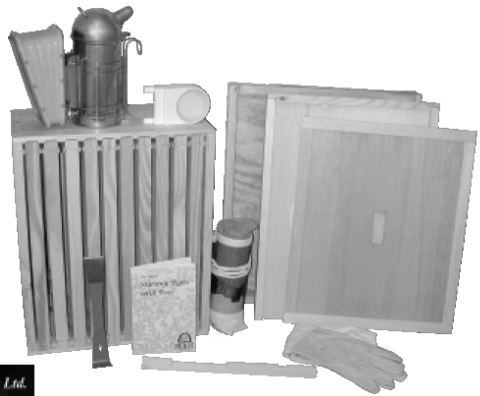
www.WoodworkingBarn.com

CALL
(609) 395-7758

Friendly Service ♦ Great Products

- ♦ Woodenware
- ♦ Foundation
- ♦ Books
- ♦ Hand Tools
- ♦ Protective Clothing
- ♦ Feeders
- ♦ Feeds & Medications
- ♦ Extracting Equipment
- ♦ Honey Containers
- ♦ Container Labels

**Call For A
Free Catalog!**



800-880-7694

Mann Lake Ltd.



www.mannlakeltd.com

2010 Winter Meeting February 13th at the Rutgers Agriculture Museum

Our speaker, Prof. Jamie Ellis, is coming up from Florida and needs to return on an afternoon flight, so we're moving his two presentations to the first part of the meeting, before lunch, and will hold the business portion of the meeting last.

8:30 a.m. -9:30 a.m. **Registration** - Coffee & donuts

9:30 a.m. -10:30 a.m. **Honey Bee Research at the University of Florida Talk**
Advances in varroa control, the effects of pesticides on developing honey bees, and discussion of a number of other projects that we are undertaking in the lab right now. Investigations of honey bee nutrition, pest/pathogen control, honey bee ecology, African honey bees and native pollinators.

10:30 a.m. **Election of officers**

10:45 a.m. - 11:45 a.m. **Small Hive Beetle Talk**
Behavior, biology and control. We will be taking a look at interactions between honey bees and their nest invaders.

12:00 noon - 1:00 p.m. **Lunch**

1:00 p.m. - 1:45 p.m. **Auction of Honey Show first place finishers**

2:00 p.m. - 3:00 p.m. **Business meeting**

James D. Ellis, PhD Assistant Professor, University of Florida

Education:

1996, College Preparatory degree, Glascock County High School, Georgia, USA
2000, BS degree in Biology, University of Georgia, Athens, Georgia, USA
2004, PhD in Entomology, Rhodes University, Grahamstown, South Africa

Research Experience:

sociobiology, honey bee pathology, ecology, and behavior, pollination ecology, honey bee chemical ecology, bumble bee ecology, honey bee nutrition, sublethal effects of toxins on bees, genetic resistance of honey bees to pests/diseases

NJBA member cost will be \$22.00 per person for adults and children 12 years and older; \$12.00 per student or child 11 years old and younger, **if paid by Feb. 1st**. At the door, \$25.00 per person for adults, and \$15 for students or children over 12 years old. For non-NJBA members the rates for adults are \$25 (prepaid by Feb 1st) and \$28 paid the day of.

Lunch Menu

lunch menu-- Sandwiches, baked ziti, dinner salad, and beverages

Please contact Curtis Crowell at 609-651-4585. Send check payable to NJBA to

Curtis Crowell
152 Broad Street
Hightstown, NJ 08520.

No later than February 1st so he can make sure that there is enough food for all.
NOTE THESE RATES HELP DEFRAY FOOD, SPEAKER AND VENUE COSTS

ELECTION ANNOUNCEMENT

THE NEW JERSEY BEEKEEPERS ASSOCIATION WILL HOLD AN ELECTION OF OFFICERS TO SERVE FOR 2010

WHEN: February 13, 2010

WHERE: Winter Meeting,
AGRICULTURAL MUSEUM—
RUTGERS UNIVERSITY, NEW
BRUNSWICK, N.J.

BRING NEW ENERGY AND IDEAS
TO THE NJBA BOARD THAT WILL
HELP NEW JERSEY BEEKEEPERS
REMAIN SUCCESSFUL IN AN IN-
CREASINGLY URBAN STATE.
RUN FOR OFFICE. You can place your
name in nomination for any office by
phone or e-mail.

Nominating Committee Preparing Report

Pursuant to Article V of the NJBA Con-
stitution, a Nominating Committee has
been formed to assist in the election of
officers at the February meeting. Mem-
bers interested in being an officer of the
NJBA should email a member of the
committee listed below in order to be
included in the written report that is being
prepared.

Chairperson; Bob Hughes, 609 585-
4359, bobsbuzzybees@aol.com

Heat Forms Potentially Harmful Substance In High-Fructose Corn Syrup, Bee Study Finds

Science Daily (Aug. 27, 2009) — Researchers have established the conditions that foster formation of potentially dangerous levels of a toxic substance in the high-fructose corn syrup (HFCS) that is often fed to honey bees. Their study, which appears in the current issue of ACS' bi-weekly *Journal of Agricultural and Food Chemistry*, may also have implications for soft drinks and dozens of other human foods that contain HFCS. The substance, hydroxymethylfurfural (HMF), forms mainly from heating fructose.

In the new study, Blaise LeBlanc and Gillian Eggleston and colleagues note HFCS's ubiquitous usage as a sweetener in beverages and processed foods. Some commercial beekeepers also feed it to bees to increase reproduction and honey production. When exposed to warm temperatures, HFCS can form HMF and kill honeybees. Some researchers believe that HMF may be a factor in Colony Collapse Disorder, a mysterious disease that has killed at least one-third of the honeybee population in the United States. The scientists measured levels of HMF in HFCS products from different manufacturers over a period of 35 days at different temperatures. As temperatures rose, levels of HMF increased steadily. Levels jumped dramatically at about 120 degrees Fahrenheit.

"The data are important for commercial beekeepers, for manufacturers of HFCS, and for purposes of food storage. Because HFCS is incorporated as a sweetener in many processed foods,

Bee Flower & Sun Honey Company

NJ - PA Local Honey Bottled or 60 LB. Pails,
Creamed Honey & Cut Comb Honey

Other Honeys Available
Yellow Beeswax
3 LB. Pkg. Bees available
April 1st 2010

Larry Saums
Bee Flower and Sun Honey Company
378 Rick Road
Milford, NJ 08848
Phone: 908-735-6946
Mobile: 908-303-6810
Fax: 908-735-2142

Email: beeflowerandsunhoney@yahoo.com
Web: www.beeflowerandsunhoney.com

The primary goals of the National Honey Bee Day program:

- 1) Promotion and the advancement of beekeeping.
- 2) Educate the public to honey bees and beekeeping.
- 3) Make the public aware of environmental concerns

The first National Honey Bee Day program was held on August 22, 2009. 15 states and 39 bee association and individual programs were presented to the public. Events consisted of programs such as educational seminars at environmental centers, open houses at apiaries, hosted honey tasting events, as well as displays at county and state fairs.

National Honey Bee Awareness Day (August 22, 2009) was formally recognized and a proclamation (click here to view) announced on the 11th. Day of August, 2009, the two-hundred thirty-fourth year of the Independence of the United States of America. Signed by Thomas J. Vilsack, the Secretary of Agriculture of the United States of America.

The first event and all the costs were paid out of the pockets of concerned individuals and association budgets. People contributed on so many levels to make this happen. This is what we were striving for when we decided to do a grassroots program. We asked beekeepers to step forward and help in the promotion of the very industry and hobby that they have come to enjoy. And did they ever! Many companies are doing wonderful things to help with solving some of the problems within the bee industry. Many bee groups are raising money for research, and funding other efforts. The National Honey Bee Day program is focused on expanding the beekeeping community, and working to educate the public to industry problems.

We are hard at work planning the next National Honey Bee Day event, which is scheduled for August 21, 2010. We will

be asking the participants of the next program to come up with a "national theme". Something like "The dangers of homeowner pesticides" or "Why the public needs honey bees". The National Honey Bee Day efforts will continue to add to the program in a positive and proactive manner, and expand the website so beekeepers and non-beekeepers can use it's resources.

Please read the information on the "Sponsors" page of this website. ***The National Honey Bee Day is 100% free*** for bee associations, bee groups, and concerned individuals to participate. (No membership fees, no yearly dues, and no obligations.) But that does not mean we do not need some help.

Whether you are a beekeeper, non-beekeeper, farmer, backyard gardener, a nature lover, a concerned steward of the environment, or anyone else, please consider getting involved on some level. Together, we can make a difference. Thank you

Contact Us

National Honey Bee Awareness Day

Attn: Mike Thomas
696 Potts Hill Rd.
Lewisberry Pa. 17339

717-938-0444

Dadant & Sons

136 Rt. 17 C (East)

Waverly, NY 14892-0267

- Quality
- Service
- Value



Your one-stop shopping center for beekeeping supplies.

Ph. (607) 565-2860 • Fax (607) 565-3710

Toll Free Order Number 1-877-532-3268

- Woodenware—Hives
- Extracting Equipment
- Protective Clothing
- Bee Medications
- Hand Tools
- Beeswax Foundation
- Books & American Bee Journal
- Smokers
- Mite Treatments
- Honey Containers
- Honey Handling Products
- Plastic Frames & Foundation

Quantities
are limited!



Order early!

- Reserve 2010 nucs now: 7 medium frames with laying hygienic queens
- State-inspected, quality nucs and queens from a chemical-free operation
- Email beelady@optonline.net, call 973 263-0674, or order on-line at www.gooserockfarm.com

BEEKEEPER

Bees give us sting therapy,
orange juice, apple pie
and even honey.



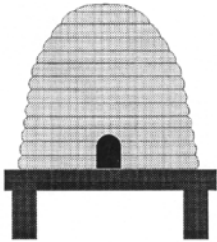
- School Lectures •
 - Swarm Removal •
 - Free Advice •
 - **Sting Therapy •**
- Call for details

Tom Fuscaldo

429 Preakness Ave
Paterson, NJ
(973) 942-5066

School or Group Presentation

Live Bees
Honey Taste



Sting Therapy

Tom Fuscaldo

(973) 942-5066

Nucs!

Honey Containers:
Glass, Plastic, Gamber

Nucs available early April

All nucs are 5 frames
with new laying queens!

quantities may be limited

Call early for best pricing

**Order early to ensure
availability**

Stiles Apiaries

Grant Stiles

(member Essex Branch)

(732) 661-0700

When it's not beekeeping but bee removal.....consider calling

The Beeman

Your customers like to talk about bees and honey, nectar and flowers, but when it comes to ladders and second story soffits, sheetrock, crawl space, dirty old insulation, attic knee-walls and the like, you can easily spend a **lot** of time at bee removal with **no** time to either talk about or even sell bee products.

Let me do the work

I charge reasonable rates, and if you make the referral I will give you the swarm if at all possible.



Robert "Beeman" Simonofsky
(member of the North West Branch of NJBA)

(908)-730-0830

Cell Phone: (908) 797-0562

Bee-lieve!

Author: Kathy Keatley Garvey

Bug Squad Blog: <http://ucanr.org/blogs/blogcore/postdetail.cfm?postnum=1898>

Wednesday October 21 2009

Dianne DiBlasi did it.

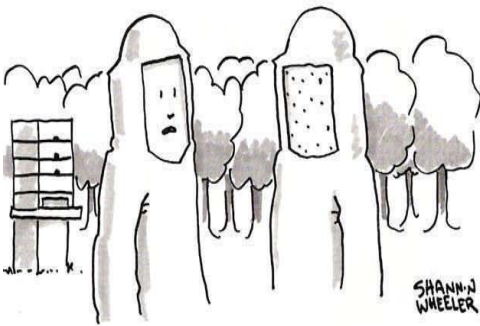
Back in January, we wrote a Bug Squad blog about Dianne DiBlasi's three-year effort to overturn an Allendale, N.J. ban on backyard beekeeping. DiBlasi, who leads a group of teen environmentalists known as Team B.E.E.S. (Bergen Environmental Effort to Save Bees) and is a member of the the [New Jersey Beekeepers' Association](#), simply wanted the Allendale Council to remove bees from the city's list of "banned and dangerous animals" and allow non-commercial beekeepers to keep their bee colonies in their yards. On Oct. 14, the Allendale Council unanimously voted to lift the bee ban. This is good news indeed. It shows what one person, with help of her friends and fellow beekeepers, can do to overturn an ordinance that needed overturning.

DiBlasi [set out to educate](#) the town officials and the community about how vital honey bees are. She pointed out that bees are important pollinators, that they pollinate one-third of the food we eat. She pointed out that bees are in trouble, due to the mysterious malady known as colony collapse disorder, and diseases, parasites, pests, pesticides, malnutrition, and climate changes. She pointed out that bees need our help and one way to help is to plant bee friendly gardens and allow backyard beekeeping.

Of course, the lifting of the bee ban comes with restrictions, such as the number of hives within a certain area. There are also requirements such as notifying the neighbors within 200 feet of any property line (if a neighbor protests, no beekeeping), protecting the area with a fence at least six feet high, licensing the hives with the Allendale officials, registering with the New Jersey apiarist, and the like.

But she did it!

DiBlasi graciously thanked the entire council for their support. "I promise you that you will be amazed at your flower gardens and vegetable gardens. Give me two years."



"John, the bees go on the outside."

Something New Try it you may like it.

This year the NJBA is going to enter the electronic age. Curtis is going to ask all the treasures to allow all the members to express their preference to have the state newsletter emailed to them as a PDF file instead of a hard copy. Its good for the environment and will help reduce our printing and mailing costs. Try it you may like it. Try it with a hard copy and see how it works. If you still want it in a hard copy that's OK too.

Note: This is the last newsletter for 2009. Dues should be paid for 2010 to receive 2010 newsletters starting Feb. / Mar.

Annual Honey Show Entry Form

Name of Entrant(s): _____

Branch Affiliation (Check one): (note your dues must be paid thru the current year!)

- Central
 Northeast
- Essex
 Northwest
- Jersey Cape
 South Jersey
- Morris
 Sussex

Name of Apiary (if applicable) or name on label: _____

Address: _____

E-mail Address: _____ Tel. # _____

Classes entered (Check all that apply): (If unsure of class for extracted, guess and judge will reassign. Judge is final arbiter of class assignment). Remember, one entry per class per entrant. (Members in a family cannot have entries in the same class unless each member has an individual membership.)

- | | | |
|--------------------------|-----------|--|
| <input type="checkbox"/> | Class 1: | Extracted Honey Light |
| <input type="checkbox"/> | Class 2: | Extracted Honey Light Amber |
| <input type="checkbox"/> | Class 3: | Extracted Honey Amber |
| <input type="checkbox"/> | Class 4: | Extracted Honey Dark |
| <input type="checkbox"/> | Class 5: | Section Honey & Cut Comb |
| <input type="checkbox"/> | Class 6: | Creamed Honey |
| <input type="checkbox"/> | Class 7: | Chunk Honey |
| <input type="checkbox"/> | Class 8: | Frame of Honey |
| <input type="checkbox"/> | Class 9: | Mead: Dry |
| <input type="checkbox"/> | Class 10: | Mead: Sweet |
| <input type="checkbox"/> | Class 11: | Mead: Made with Fruit Juices |
| <input type="checkbox"/> | Class 12: | Mead: Sparkling with or without Fruit Juices |

0	Class 1: Extracted Honey Light	0	Class 11: Mead: Made with Fruit Juices
0	Class 2: Extracted Honey Light Amber	0	Class 12: Mead: Sparkling
0	Class 3: Extracted Honey Amber	0	Class 13: Beeswax Block
0	Class 4: Extracted Honey Dark	0	Class 14: Novelty Beeswax
0	Class 5: Section Honey & Cut Comb	0	Class 15: Beeswax Tapers
0	Class 6: Creamed Honey	0	Class 16: Novelty Beeswax Candles
0	Class 7: Chunk Honey	0	Class 17: Hand Cream
0	Class 8: Frame of Honey	0	Class 18: Soap
0	Class 9: Mead: Dry	0	Class 19: Lip Balm
0	Class 10: Mead: Sweet	0	Class 20: Photography

NJBA SCHOLARSHIP PROGRAM 2010

- I.** **GOAL:** The scholarships are designed to assist New Jersey youth learn about and become involved in beekeeping by paying the cost of attending the short course in beekeeping at Rutgers New Jersey Agricultural Experiment Station Office of Continuing Professional Education at the Rutgers EcoComplex in Bordentown, NJ or at an introductory short course offered by one of the New Jersey Beekeeper Association (NJBA) branches, such as offered in 2009 by the Essex, Sussex and Jersey Cape branches.



The scholarship is for the full tuition and meals, if applicable. Those awarded scholarships must provide their own transportation to the course.

- II.** The Scholarship Program will continue to be in effect until discontinued by the NJBA Executive Board.
- III.** Advertising-- notice of the Grant program will be placed in each copy of the NJBA newsletter with references to the NJBA website where application details and deadlines will be published and maintained.
- IV.** Applicant restrictions--- The scholarship is open to any youth who is a full-time student between the ages of 12 and 22 as of the start date of the course.
- V.** Application Process- Applications will be directed to the NJBA web site address c/o the webmaster no later than Feb 1, of each year. Applications received after this date will need to be resubmitted by the applicant the following year. They can also be submitted via snail mail to the NJBA Secretary:

Curtis Crowell
152 Broad Street
Hightstown, NJ 08520

The webmaster and secretary will insure that all information identifying applicant (name, address, and any information indicating sex, and race) will be removed from documents before being forwarded to the NJBA Executive Board. Notices of the awards will then be mailed and posted.

- VI.** [Application](#) Information: The following information is required:

Which course the application is for (currently Rutgers, Sussex and Essex), applicant name, address, birth date, phone and email and a brief essay of no more than 200 words on the topic “The Importance of Beekeeping”.



Annual Honey Show

Entries for the honey show that are ready at the time of the Jan. 15, 2010 Executive Board Meeting can be delivered to the

meeting by a board member and consolidated. Otherwise, people can get them to Janet A. Katz in the north, Bob Hughes in Central and Tim Schuler in the south no later than Thursday, February 4th. Entries may also be delivered to the honey show prior to 9:00 a.m. on Friday, February 5, 2010 at the State House Annex. Additional information and details can be obtained by contacting Honey Show Chair Janet A. Katz, janet@rapseik.org, 908 879-4377. The honey show will be in a central, public area this year and will remain up through Thursday morning, February 11th, so members can come take a look.

Annual Honey Show Rules

Exhibitors must be current NJBA members, with dues paid for 2010. All entries must be the product of the entrant's apiary and must have been produced since the previous year's honey show. Entries in Classes 1 through 7 in the Honey division and entries in the Cosmetics division should have labels on all three entries in each class. Entrants are limited to one entry in any given class. That means peo-

ple with family memberships are limited to one entry per class per family.

Entries may be delivered to a member of the NJBA Executive Board (these are state officers, branch presidents and secretaries) or any person attending the last Executive Board meeting prior to the State Honey Show (January 15, 2010), or delivered directly to the show prior to the judging. If the entries are not delivered directly to the show by the exhibitor, the exhibitor must fill out an entry form, which will be consolidated at the Executive Board meeting where entries are collected, to insure that all entries are accounted for prior to judging.



Honey:

1. Classes 1 through 4

(Extracted Honey): Entries must be in glass Queenline type jars or Gamber Classic honey jars with plain metal or plastic lids. Honey color will be graded by the show chairman and judged on density, absence of crystals, cleanliness, flavor, fill and container appearance.

2. **Class 5 (Sections and Cut Comb):** Sections must be in window cartons, and Ross Rounds must have transparent plastic lid. Cut comb should be in clear plastic containers.

3. **Classes 6 (Creamed Honey) and Class 7 (Chunk Honey):** Must be in clear, one-pound glass jars. Creamed honey will be graded on fineness of crystals, uniformity and firmness, cleanliness and freedom from foam, flavor and fill. Chunk honey is graded on cut, cleanliness, uniformity, density and flavor of liquid.

Class 8 (Frame of honey): Must be displayed in bee proof cases, which have both sides made of transparent glass or plastic. The frame is judged on uniformity, absence of uncapped cells and watery cappings, cleanliness, freedom from granulation and pollen.

Show Classifications

Mead:

All mead entries should have been produced by the exhibitor by the process of fermentation.

1. All entries in Classes 9, 10 and 11, should be exhibited in clear, non-frosted wine bottles, standard 750 ML or 25.4 FL OZ. Natural cork, plastic stoppers or screw-tops may be used. Entries in Class 12, sparkling, should be in champagne-type bottles.

Beeswax:

1. It is suggested that entries be covered with clear plastic.
2. The optimum color for pure beeswax is light yellow.

Cosmetics:

1. Class 17 (Hand cream/lotion): All jars must be a minimum of 1.5 ounces. Entries will be judged on jar appearance, consistency and texture of product, and fragrance added.
2. Class 18 (Soap): Bars must be a minimum of 3 ounces. Soap will be judged on packaging, overall appearance and fragrance.
Class 19 (lip balm): Tins, plastic pots or tubes must be a minimum of .15 ounce. Lip balm will be judged with the same considerations as in Class 17.

Photography:

Prints should be 5" x 7" or larger, mounted on a mounting board that extends at least one inch beyond the print on each side. No frames are permitted. Photos must relate to beekeeping and can be close-ups, scenic's (e.g. apiaries, hives) or a portrait (person who is obviously a beekeeper or performing a beekeeping procedure in an appropriate setting).

Exhibitors should refer to copies of individual class score cards for details on judging criteria, these are available on the NJBA website or by contacting the Show Chair, Janet A. Katz, 908 879-4377.

Extracted Honey Division

Class 1: Light

Class 2: Light amber

Class 3: Amber

Class 4: Dark

Entries in each class should be in glass Queenline or Gamber Classic honey jars. Each class requires an entry of three jars, all three with labels.

Honey Comb/Spreads Division

Class 5: Sections

Three Box or Round sections or cut comb

Class 6: Creamed honey

Three cylindrical or square, glass, 16 oz. jars

Class 7: Chunk Honey

Three cylindrical or square, 16 oz. jars

Class 8: Frame of honey

One frame, wooden or plastic

Mead Division:

For all classes: one clear, non-frosted wine bottle, cork or screw top, 750 ml

Class 9: Mead, dry

Class 10: Mead, sweet

Class 11: Mead made with fruit juices

Class 12: Mead, sparkling. Made with or without fruit juices

Beeswax Division

Class 13: Beeswax. Single block, one pound or slightly more, pure beeswax

Class 14: Novelty beeswax. A single or a coordinated set of any size, any shape pure beeswax item(s) with no wicks

Class 15: Taper Candles. One pair, poured or dipped tapered candles, pure beeswax

Class 16: Novelty candles. A single or coordinated set, any size, any shape, pure beeswax. They may be decorated and/or painted.

Cosmetics Division

Class 17: Hand cream/Lotion

Three jars of hand cream/lotion, containing beeswax

Class 18: Soap

Three bars of soap, containing beeswax

Class 19: Lip Balm

Three tins or tubes of lip balm, containing beeswax

Just a Few Pointers

Photography Division

Class 20: Photography

Photos must relate to beekeeping and can be close-ups, scenic's (e.g. apiaries, hives) or a portrait (person who is obviously a beekeeper or performing a beekeeping procedure in an appropriate setting).

Best of Division

The Best of Division must be a First Place Winner in one of its division's classes. The judge will decide which one First Place Winner receives the Best of Division award.

Best Exhibitor Award

Best Exhibitor will be awarded to the person receiving the highest accumulation of pointers. Their name will be engraved on an annual plaque to be displayed during the annual New Jersey State Honey Show

<u>Place</u>	<u>Awards</u> <u>Ribbon</u>	<u>Points</u>
1st	Blue	4
2 nd	Red	3
3 rd	White	2

Honorable Mention – 1 Point

Best of Show Award

Best of Show will be awarded to the person who, in the opinion of the judge, has the single first place entry that represents the division and class entered better than any other first place entry. Their name will be engraved on an annual plaque to be displayed during the annual New Jersey State Honey Show.

All entries that win a first place will be put up for auction at the winter general membership meeting in February. At that time, all entrants can pick up their entries, ribbons, checks and score sheets.

Application of Rules

No changes can be made in the judging and scoring criteria at any point during the show.

Handling of Honey Entries At Check-In: Jars should be handled by lids so not to get finger prints on the side of the jars. Do not tip the jars so honey will get on the inside of the cover. The person responsible for organizing the show and checking in entries is normally responsible for placing the entries in the appropriate color classes.

Honey: All types of exhibited honey should be in clean jars that are attractively labeled (many shows do not allow labels). Labels should contain all legally required information, be the correct size for the jars or boxes, and be positioned uniformly and correctly. Avoid handwritten labels. Be sure to fill all jars consistently to the top of the lip that encircles the neck, and that the same type of honey is placed in each jar. Lids should be free of honey, both inside and outside. A lid glued in place by honey is a safe way of losing points from the judge who is blue in the face after a futile attempt to open the jar. Many exhibitors will put new lids on after arriving at the show site, and will be careful not to tip their jars and get honey inside the lids.

Liquid honey must be free from crystals, air bubbles, pollen, dirt and lint. Samples are checked stringently for these items with a polariscope, so strain honey very carefully. Any foam, wax or soap residue that appears on the surface of the honey will cause lost points. The finest samples of extracted honeys will have an impressive sparkle of cleanliness when held up to a light.

Air is incorporated into honey as it is thrown from the cells in combs and splatters on the sides of the extractor. There is no way to avoid this problem. Air also may be, incorporated by a honey pump or as the honey falls from a strainer into a tank below. Air must be removed when the honey is packed. This is best done through long-term settling. Air bubbles and foam, in addition to being unsightly; often contain small dust particles that may start granulation. Air is easily detected as a ring of foam around the inside top of the jar. It may also sometimes be seen under the jar's shoulders.

Douglas Farm

Gladstone, NJ 07934
www.douglasfarm.net



Products

- . Mono-floral & NJ Wild Flower Honey
- . Handmade Beeswax Candles
- . Natural Beeswax Bath Products

Services

- . Pollination
- . Bee Presentations
- . Swarm Collection

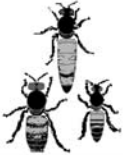
Live Bees:

- NJ Inspected & Certified Disease Free
- NJ Raised & Mated Queens
- Breeding traits tested & selected for hygienic behavior and strong production
- Marked Queens

3 Breeds Available

Order Date	3lb Italian Package	Standard Nuc	Super 10 Nuc
Before Jan 1st.	\$ 95	\$ 120	\$ 175
Jan 1st - March 1st	\$ 100	\$ 125	\$ 180
After March 1st	\$ 115	\$ 140	\$ 195

Italian
"Wild or Brunette"



Cordovan Italian
"Blond Italian"



New World Carniolan *



Contact:

Brian or Earl Rowe
bdrowe81@gmail.com
908-443-1199

Wilson's Honey

Est. 1950

New Jersey & New York Honey in 60lb. buckets

Distributor of Packages

3lb. Packages/Queens

Taking orders for April 2010

Reserve Early!!

Central Jersey Beekeepers Association Member
Life Member of EAS

Walt Wilson Jr. (518) 497-6723 Or (732) 546-5406

Email: wilsonshoney26@yahoo.com

Jean's Honey, Inc.



NJ - NY - PA - Honey in
 60 lb. Pails
 Cut Comb Honey
 NJ Nucs Available
 in Spring
George Schaefer
 (908) 782-7912

Mind Your Own "Beeswax Products"

**Producers of Quality Bees-
 wax Candles & Beeswax
 Hand Creams & Lotions**



*Enhance your selling power
 at fairs, shows and festivals
 with our line of quality bees-
 wax products*

Wholesale & Retail Pricing Available

Visit us at

www.mybeeswaxproducts.com

or send for our catalogue sheet

**PO BOX 1
 CROSSWICKS NJ 08515-0001
 (609)758-3215**

npuvel@comcast.net

10% discount on retail sale
 for all NJBA members

NJBA news annual ad rates

Ad size	Location of ad	Price
Full page	1st 25% of newsletter	\$150
1/2 page	1st 25% of newsletter	\$100
1/4 page	1st 25% of newsletter	\$75
1/8 page	1st 25% of newsletter	\$50
Full page	rest of newsletter	\$100
1/2 page	rest of newsletter	\$75
1/4 page	rest of newsletter	\$50

Note; Please contact Curtis Crowell about placing, designing, formatting, cost, and all correspondence about ads.

At: 609-651-4585 or
curtis.crowell@att.net

Letter From The Editor

Are we finished for the season yet? No not yet. Do our 2 deep broad boxes weight about 60 lbs.? Which equates to about 8



frames of honey, 2 frames of pollen and the rest of the frames with honey, pollen, and bees. This would be an optimum hive, any thing less could become a problem. Bees normally stop taking sugar water in November so the only thing to do would be to feed sugar candy, fondant, or raw sugar on top cover, and hope they will get enough food to survive. Do you have the top of the hive vented? You need to get that moisture out, any moisture dripping on the bees "kill". Do you have the entrance reduced? Have to keep out those rodents and prevent other bees from robbing.

By December the broad rearing will stop and the population will drop to around 20,000 bees but shouldn't drop any lower in the hive because bees live longer in the winter. The hive should stay this way till around the early part of January and as the days gets longer the queen will start to lay some eggs, and the bees will start to look forward to spring. So if you did everything right in the summer and the fall you shouldn't have much to do with your hives but sit back occasionally checking them and get ready to see them grow.

Now you can take a short break, enjoy the holidays. After the holidays it's time to start planning for the new year. Ask yourself do you want to expand? How much equipment will you need? When you answer these questions and make your decisions, you will have to order your bees (packages or Nucs.), Queens if your making splits and equipment that you will need. When getting your equipment ready its always good to have that extra hive for

a swarm. Better build those extra honey supers because you're going to need those extra supers for all that honey your going to get (You Gotta Believe).

P.S. Have a happy holidays, Then start thinking about the honey show and our winter meeting. This year with the show in Trenton and on display for a week it will be in a good place for many to see. Time to show the state that the NJBA is still alive and well, this is a time for us to be in the spot light.

Don't forget about our winter meeting our speaker Prof. Jamie Ellis is one of the leaders in his field. It should be interesting. Plus there's the auction a place to get those blue ribbon prizes and see what makes them special. Hope to see you there.

CUSTOM BUILT

HONEYFRAME DISPLAY CASES



"Great for honey shows & displays"

AND

PORTABLE ODSERVATION HIVES

A. TRAPANI
(609) 259-7457
atrap69530@aol.com

Recipes



Cornbread

- 3 cups yellow cornmeal
- 1 teaspoon salt
- 1 cup whole wheat flour
- 2 tablespoons baking powder
- ½ cup melted butter or safflower oil
- ½ cup honey**
- 3 eggs, beaten
- 2 cups buttermilk

Preheat oven to 350

In a large bowl, combine dry ingredients; mix well. In a small bowl, stir together wet ingredients. Add wet ingredients to dry ingredients and mix just until dry ingredients are moistened. Pour into a 13 x 9 x 2 inch pan.

Bake 25-30 minutes or until tests done in center with a toothpick.

Honey Pumpkin Tea Bread

- ½ cup (1stick) unsalted butter, at room temperature, plus additional for the pan
- 2 cups all-purpose flour
- 1 teaspoon baking soda
- ½ teaspoon ground cinnamon
- ½ teaspoon ginger
- ½ teaspoon grated nutmeg

1 cup honey

- 1 cup canned pumpkin (not pumpkin pie filling)
- 2 eggs, room temperature
- 2 teaspoons lemon juice
- 1 teaspoon vanilla extract
- ½ teaspoon salt

Preheat oven to 350. Position rack in center of oven. Generously butter a 9 x 5 metal loaf pan and set aside.

Sift flour, baking soda, salt, cinnamon,

ginger and nutmeg into a medium bowl. Set aside.

In a large bowl, combine butter and honey and beat with an electric mixer at medium speed for 2 minutes or until smooth. Add the pumpkin; beat for 1 minute or until well combined. Beat in eggs one at a time, beating each for 1 minute. Stir in lemon juice and vanilla extract.

Add the sifted dry ingredients. With the mixer on low, beat just until incorporated. Increase mixer speed to medium and beat for 2 minutes or until the batter is smooth, scraping down the sides of bowl as necessary with a rubber spatula. Spread into prepared pan.

Bake about 65 minutes, or until a cake tester or wooden skewer inserted into the middle of loaf comes out clean. Cool the bread on a wire rack for 10 minutes, then unmold and continue cooling on the rack for 30 minutes before cutting.

Honey Eggnog

- 3 cups whole milk
- 1 egg, lightly beaten
- 1/3 cup honey**
- 1/8 teaspoon ground cinnamon
- 1/8 teaspoon ground nutmeg
- 1/8 teaspoon salt
- 1 teaspoon vanilla extract
- ½ teaspoon rum flavoring
- Whipped topping (optional)

In large saucepan, combine milk, egg, honey, cinnamon, nutmeg and salt; mix well. Bring to a boil over medium heat, string constantly. Remove from heat; stir in vanilla and rum flavoring.

Chill at least 2 hours. Serve with whipped topping as desired

ROOT PUBLICATIONS	ASSOCIATION MEMBER SUBSCRIPTION <i>Bee Culture Magazine</i>	
Please Print Clearly		
Association _____	Secretary's Name _____	
Subscriber's Name _____	Address _____	
Address _____	City _____	
City _____	State, Zip _____	
State, Zip _____	Comments _____	
Phone # _____	For Office Use Only Acct. # _____	
<input type="checkbox"/> NEW	<input type="checkbox"/> RENEWAL	<input type="checkbox"/> 1 Yr. - \$21.00 <input type="checkbox"/> 2 Yr. - \$38.00
<div style="border: 1px solid black; padding: 2px; display: inline-block;"> Canada - add \$15.00 per year All other foreign add \$20/year </div>		
Return white copy to: Bee Culture, Subscription Dept., P.O. Box 706, Medina, OH 44258 *Please discard any other forms. Use only this form.* Prices subject to change without notice.		

WHO'S WHO in NJBA

President –Pete Leighton, 732-928-4259, jpleighton1@verizon.net
1st Vice President –William Coniglio, 732-247-1424, wrabbit1@ix.netcom.com
2nd Vice President –Landi Simone, 973-263-0674, beelady@optonline.com
3rd Vice President –Karoly Toth 732-873-2989
Secretary—Treasurer -Curtis Crowell, 609-651-4585, curtis.crowell@att.net
Recording Secretary -Open
1st Past President– Bea Tassot, 908-264-4504 , bea-jeanclaude@tassotapiaries.com
2nd Past President– Bob Hughes, 609-585-4359 , BobsBuzzyBees@aol.com.
EAS Director -Dave Peregmom, 856-981-9483, cell 856-981-9483 preferred, dave sawmill@msn.com
Ag. Week Delegate –A. Trapani-609-259-7457
MAAREC Representative -Joe Lelinho, 973-228-4806, Klutch.cargo@verizon.net
Research Committee—Jake Matthenius, 908-454-7316
Speakers Bureau & Film Librarian -Pat Ricci, 609-758-8729, Mrpatr@comcast.net
Honey Queen Program - Tim Schuler, tim.schuler@comcast.net
Honey Queen –Emily Schuler, tim.schuler@comcast.net
Budget Committee -Ray Markley, 609-261-1638, rambeeman@aol.com
Honeybee Advisory Committee -Bob Hughes, 609-585-4359, Bobsbuzzybees@aol.com
Publicity –Seth Belson, 856-285-0074, snakesrb@comcast.net
Web-Master -Janet Katz, janet@rapseik.org
NJBA Newsletter Editor- Angelo Trapani, 609-259-7457, atrap69530@aol.com
Meeting Program- open

**NEW JERSEY STATE APIARY INSPECTOR: -Tim Schuler, (609) 292-5440,
Tim.Schuler@ag.state.nj.us**

Branch Presidents:

Central Jersey—Pat Ricci, 609-758-8729, Mrpatr@aol.com
Essex County– Joe Lelinho, 973-228-4806, Klutch.cargo@verizon.net
Jersey Cape -Karl Novsak, 609-523-1765 (telephone preferred), knovsak@virizon.net
Morris and Somerset County –Mark Muller, 732-357-5895, markmuller@optonline.com
Northeast Jersey –Fred Canavan, 201– 394-7040, canavan.fred@gmail.com
Northwest Jersey –Scott Horsnall. 609-397-5475, SLHORSNALL@mactec.com
South Jersey -Seth Belson, 856-285-0074, snakesrb@comcast.net
Sussex County –Bill Foley, 845 726-4211, wfoley@warwick.net



Branch Club Dates:

Central Xmas party Dec. 19 Captain's inn
Jersey Cape Third Thursday, 7:00 p.m. Cape May County Extension, Except July and Dec.
Morris and Somerset County: Check website calendar after end of Jan. 2010 for meetings
North East : Third Friday, 678 S. Maple Ave. Glen Rock, 7:30 p.m.
Sussex: Jan. 10, 2010 Meeting at School of Conservation in Stokes Forest 1 P.M. .
Essex: Feb. 27, Mar. 6, 2010, Beekeeping Course, EEC, Roseland. Details on website
North West: December, 2009, Annual party and year end meeting. See website for details.

NEW JERSEY BEEKEEPERS ASSOCIATION

Membership Form

Check one: New Renewal

Name _____
Address _____
City _____ State _____ Zip _____
Phone _____ Branch _____
E-mail _____

Check here if you agree to have your name, city, phone and e-mail address published and made available to other NJBA members only (your full mailing address will **not** be published).

Make checks payable to your local branch (e.g. "Essex Beekeepers") and mail the dues with a copy of this form to the appropriate branch treasurer below.

Membership is for a full calendar year, ending December 31st. Dues are payable by January 1st of the current year and are considered delinquent as of March 1st. New memberships paid for after July 31st are good through December 31st of the following year. Dues must be current to receive the state newsletter, informational emails from the state, be listed on the product or swarm collector web pages and to enter the annual honey show.

Junior Membership (under 18)....\$ 8

Membership\$20

Central Jersey Branch: Curtis Crowell, 152 Broad St., Hightstown, NJ 08520

Essex County Beekeepers: Joe Lelinho, 15 Hill St., N. Caldwell, NJ 07006

Jersey Cape Branch: Bill Eisele, 280 Old Tuckahoe Rd., Petersburg, NJ 08270

Morris County Branch: Rich Lepik, 2091 Primrose Ln., Martinsville, NJ 08836

North East Branch: Karl Schoenknecht, 683 Summit Ave., Franklin Lakes, NJ 07417

North West Jersey Branch: Karin Weinberg, 337 Tunnel Rd., Asbury, NJ 08802-1120

South Jersey Branch: Tim Schuler, PO Box 228, Richland, NJ 08350

Sussex County Branch: Linda Osborne, 23 Fox Hill Road, Lafayette, NJ 07848

New Jersey Beekeeper Association
Angelo Trapani
Olde Noah Hunt Rd.
Clarksburg, N.J. 08510

JERSEY FRESH

FROM THE GARDEN STATE

NON-PROFIT
ORGANIZATION
U.S. POSTAGE
PAID
FLEMINGTON, NJ
PERMIT # 107

